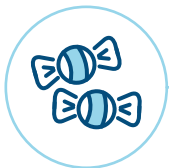


## TAKING CARE OF YOUR TEMPORARY CROWN



Crowns and bridges are usually completed in two appointments. You may experience some soreness around the gum line. Rinsing with warm salt water several times a day will help speed healing.

A temporary crown is placed on your prepared tooth for protection. In the rare event that your temporary crown comes off or becomes loose prior to you receiving your long-term crown, please call our office immediately. Do NOT leave the temporary off.



Avoid eating sticky foods, gum, ice or other hard foods with your temporary crown in place.

When eating, chew food on the other side of the mouth.



When you receive your long-term crown(s), you may experience hot/cold or pressure sensitivity. Your bite may also feel slightly different; however, if any of these symptoms become worse after several days, contact us so we can see you as soon as possible.

Continue to brush your temporary crown, but refrain from flossing while temporarily cemented to prevent it from falling off.



With bridgework, you may need special floss threaders to clean areas properly. We recommend electric toothbrushes or water flossers to patients with crowns or bridges.